



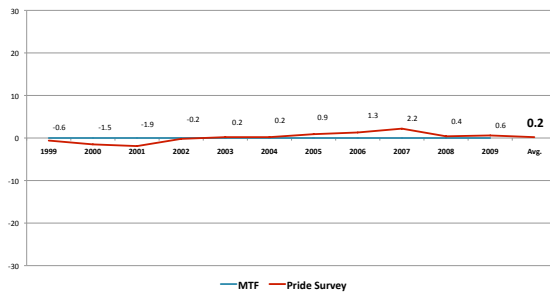
President, Pride Surveys ■ doug.hall@pridesurveys.com ■ 404.577.3045

DOUG HALL

% of School Districts participating in statewide student surveys conducted by Pride Surveys

Alabama	100
Arkansas	89
New York	84
Oregon	77

Alcohol Prevalence Difference, Monitoring the Future (MTF) and Pride Survey, 1999-2009, Averaging Lifetime, Annual and Past 30-day



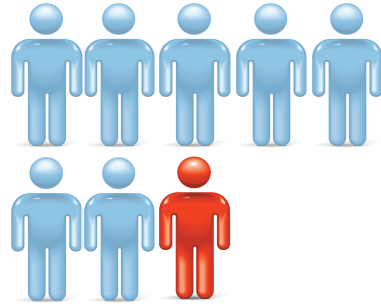
Cost: Approximately
\$1.75 per student
or
1/200th of 1% of average annual
per pupil expenditure in the
United States.



2008-09 Pride National Summary

Grades 6-12, n=122,243

One in seven students seldom or never feels safe in the classroom (15%)

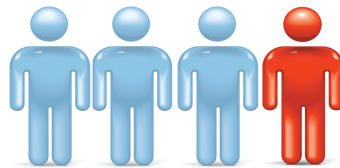


US STUDENTS, GRADES 6-12, N=122,243, PRIDE NATIONAL SUMMARY

One in four students seldom or never feels safe in the school bathroom (25%)



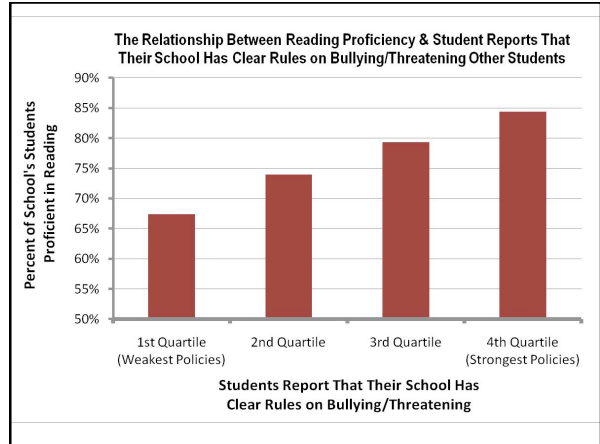
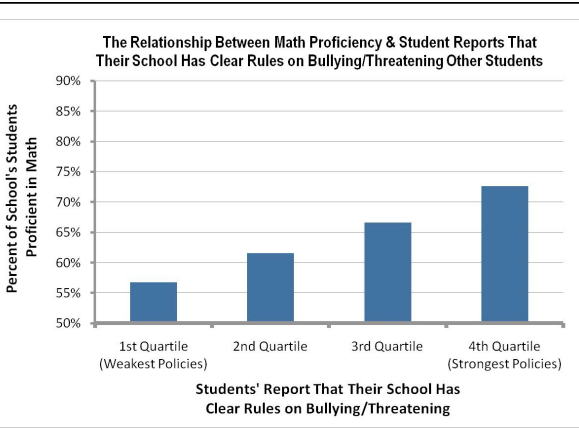
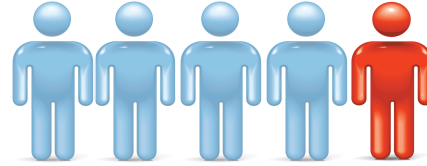
One in four students seldom or never feels safe in the school parking lot (25%)

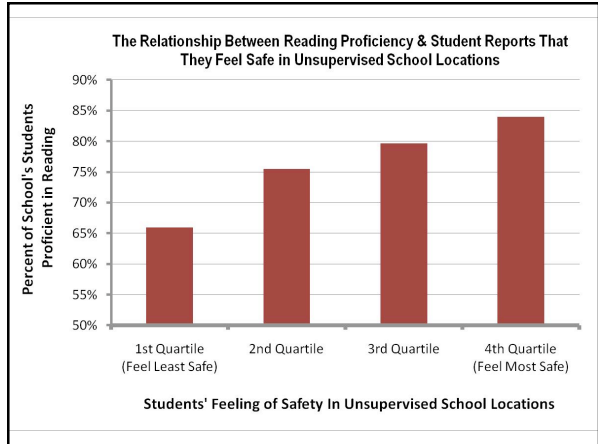
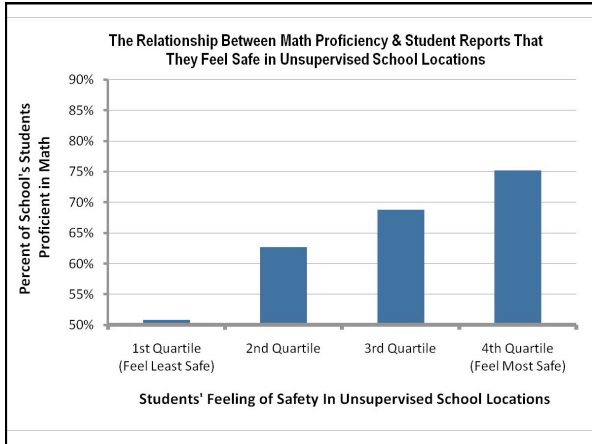


One in five students has been afraid another student may hurt them (19%)



One in five students has been hit, slapped or kicked by another student (18%)





Conclusions

There is an obvious relationship between the school safety variables and academic achievement.

It is possible and practical to collect social/psychological data at the school-building level on a statewide basis.

The effort is relatively inexpensive. Every student in Nebraska could be surveyed for the cost of 130 feet of a new two-lane rural highway, approximately \$300,000.

In a well run project, the data can be collected without controversy or undue burden on either the schools or students.

Once the survey becomes routine, virtually all schools participate, even when participation is voluntary.

Large, valuable data sets already exist that are relevant to the school climate/academic achievement relationship.